

The Strafford



HOOBER
homes

hooverhomes.co.uk

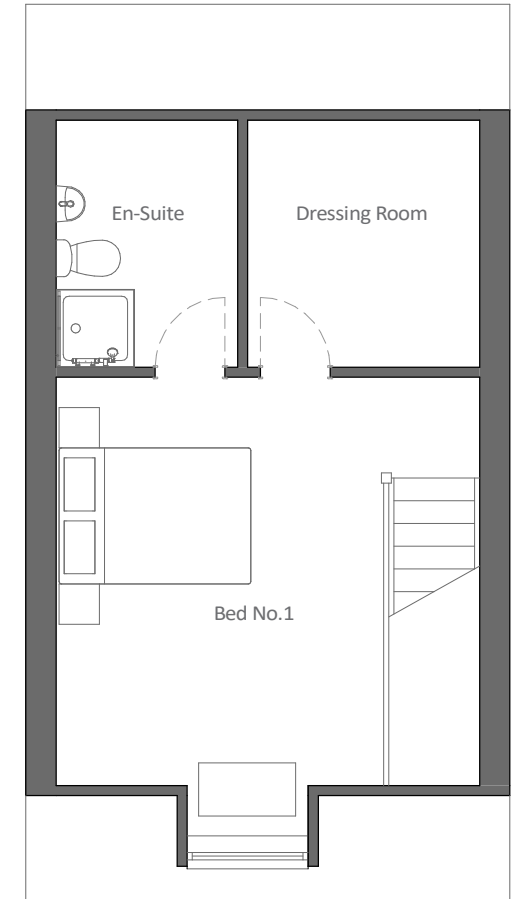
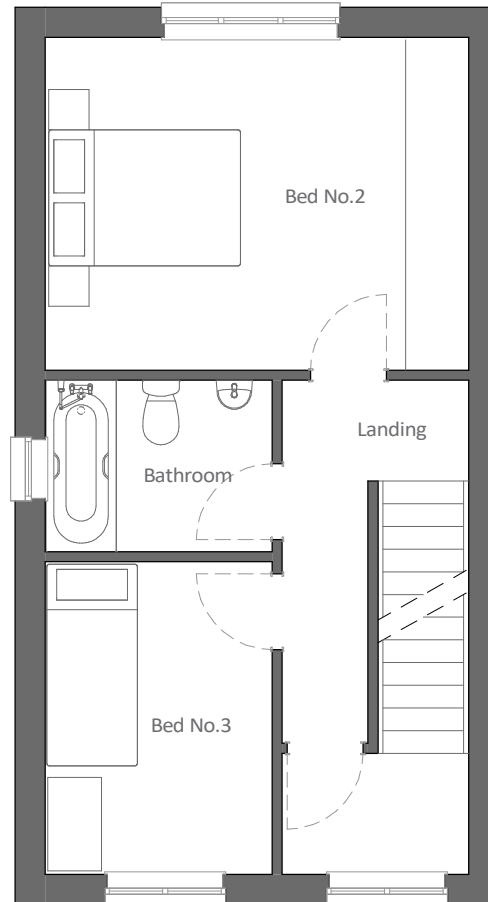
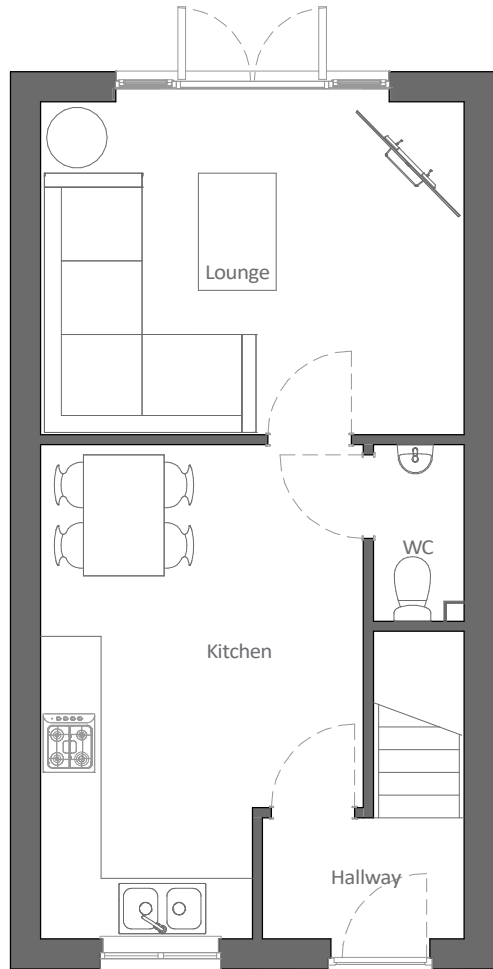
The Strafford

3 bedroom semi-detached house

Call: 01709 718900
Email: sales@hooberhomes.co.uk

HOOBER
homes

hooberhomes.co.uk



Ground Floor

Hallway	2.00m x 1.20m (6'7" x 3'11")
Kitchen	3.20m x 4.90m (10'6" x 16'1")
WC	0.90m x 1.75m (2'10" x 5'7")
Lounge	4.20m x 3.30m (13'9" x 10'10")

First Floor

Bathroom	2.25m x 1.70m (7'5" x 5'7")
Bed No. 2	4.20m x 3.30m (13'9" x 10'10")
Bed No. 3	2.25m x 3.10m (7'5" x 10'2")

Second Floor

Bed No. 1	3.30m x 4.05m (10'8" x 13'3")
Dressing Room	2.30m x 2.45m (7'7" x 8'0")
En-Suite	1.80m x 2.45m (5'11" x 8'0")

Please note: Sizes and dimensions are approximate, actual may vary. Style and exterior of each house type vary. Please contact sales for further details.